



# CHRONICLE

No. 4 This newsletter is supported by the Sala Kryszek Memorial Publication Fund



## From the Pulpit

The great modern Jewish thinker Abraham Joshua Heschel wrote that when it comes to describing the Torah and the mystery we call God, "every statement is an understatement." Nevertheless, all we have is our words... but we can choose to turn words into songs, into dance, into poetry. This month I thought I would share a poem I wrote describing my own love of Torah.

## Song to my Torah

Oh my peoples book that I was born into  
For if I entered into any other tribe it would be they whose path  
Led me back to the soul of the universe  
Oh but ours is the longest endured and it is you who still sings to me  
With all my questions I turn to you even though  
In the beginning I was told not to know  
"You shall not eat of it" knowledge is for my maker  
It is the tree of life whose shade I may seek  
Choose life! Live the dignity of experience  
through my deeds  
our mitzvot  
will I know you  
My blessed inheritance  
the knowledge you speak of is not always mine  
my wonder, my ponder, my muse  
and the questions I ask with my critical use of reason  
No! the answers you forbid are to questions of good and evil  
Questioning the ethics of the Creator  
Job told me we cannot hold you accountable to our moral standards  
so it seems we can know in the way us humans will analyze but the  
fruit of God's morality we can never eat  
Oh my peoples muse you accept no dichotomies  
Your arguments of philosophy come only in rhetoric  
Still I scroll through your library of ideas  
and chant your metaphorical history.

-Rabbi Bradley Greenstein



## From the President Mazel Tov to Neveh Shalom!!

Your Board of Directors has been very busy over the last months with several important issues that will have an impact on many of you. First, I am happy to report that we have successfully extended **Rabbi Greenstein's** contract until 2014. During their first two years, Rabbi Greenstein and his family have had a significant and lasting impact on the congregation.

[continued on page 10](#)

## Capital Campaign



Once in a Generation  
— For Generations to Come

How many Pavers do you think  
are in the Upper Plaza?  
(See answer on page 14)

How many Patrons... \$1800 donors do we need to help  
us reach our Paver Capital Campaign goals in the Upper  
Plaza?

(See answer on page 14)

**All Paver donors are creating a lasting memory...  
L'dor V'dor (From Generation to Generation)  
with their generosity and support.**

Don't Miss This Opportunity To be a Part Of Neveh  
Shalom's Permanent History...  
Personalize a paver stone in Neveh Shalom's new Upper Plaza.

What could be a more lasting way to participate in the  
Neveh Shalom Capital Campaign than to purchase  
personalized paver stones that will permanently welcome  
people into the new plaza?

## Pricing:

Individual \$180 per paver

Patron \$1800 for 6 pavers

Patron donors also will receive:



Family name listed on a plaque  
overlooking the new Upper Plaza



Special invitation to private Patron Party  
on the Plaza following installation

## November Tikkun Olam Projects Successful!

### Blood Drive

Many thanks to all who participated in our Blood Drive on November 16. A total of 36 people showed up to give blood, resulting in the final collection of 29 pints. Neveh Shalom and the American Red Cross extend appreciation to all our volunteers. Your gift enables people to have surgery, survive a serious accident, or lengthen their life span. Consider yourselves heroes because despite all the advances of modern medicine, without life-giving blood, many people would not survive. Our next blood drive is in May, 2009. Watch the Chronicle and your email for more information, or contact **JoAnn Bezodis** at jbezodis@nevehshalom.org 503-293-7309.

### Support the Troops

#### Package Project

On 11/16/2008, the Congregation Neveh Shalom Men's Club sponsored a Mitzvah Action Project, supporting an organization known as Coalition for Troop Support (<http://www.cotsupport.org/>). 21 CNS congregants, including 13 Men's Club members, donated food and comfort items and/or volunteered to assemble the donated items into snack and comfort kits for military service personnel currently serving in Iraq and Afghanistan. Linda Christy, from COTS, reported that she felt the project was a big success, generating 105 kits that COTS will send to our service personnel, valued at about \$2000!

I'd like to thank everyone who contributed to this project, and especially to our Super Setup Crew, and the Sylvan Middle School kids, for their very special donation! Linda was also grateful for a donation of money, which helps to defray the approximately \$150 cost of shipment for the kits.

Linda says, "Your group will be sending a little bit of home to 64 of our service men/women in harm's way - You can be very proud of your group!!" I certainly am. This was the first time we did this project, but given the success of this effort, and the feelings it engendered in those who participated, it won't be the last.

Thanks so much for everyone who set up, donated, assembled kits, or generally supported the Mitzvah Action and Tikkun Olam Committees in making this successful project possible!

### David M. Sibell, MD

Chairman, CNS Men's Club Mitzvah Action Committee

### Dante Stone

January 2nd & 3rd



Mazel Tov to **Dante Stone** who is becoming Bar Mitzvah on 01.02.09 and 01.03.09. He is the son of **Eric & Kat Stone**, grandson to **Trudi Stone**, Richard Stone of Temple Beth Abraham,

Oakland, CA, and Bill & Carolyn Dunlop of Aloha, OR and brother to **Matisse Stone**. Dante is a 7th grader at Hazelbrook Middle School and his hobbies include Boy Scouts (Star Rank & Troop Bugler); Jazz & Concert Band (Trumpet); golf, swimming, and loves animals, nature and birding - goes birding with Grandma Trudi.



### Jewish Film Club

Sunday, February 1,  
2:30pm

(an alternative to Super Bowl)

Each 4-6 weeks we gather to enjoy a film of Jewish interest, schmooze & nosh.

If you are interested in receiving more information, please contact

**Joan & Paul Sher** at

joanzsher@aol.com; paulpscher@gmail.com; or sherpohsu@aol.com to be placed on the email list.

### Erev Shabbat Services

All Erev Shabbat services are at 6:15pm. Each 6:15 service has a distinct flavor of its own. We invite you to sample:

#### 1st Friday-Kabbalat Shabbat

Singing Service with Ilene Safyan

(monthly all member dinners will follow reservations required).

#### 3rd Friday-Chik Chok- A lay-led

"Carlebach-style" service

(followed by dinner with reservations required).

#### 2nd, 4th and 5th Friday-

Kabbalat Shabbat Service

## Refuah Shlema

Refuah Shlema, a speedy recovery to

Jonas Blaut, Sheri Cordova, Carol Danish,

Martha Dechard, Sharlene Harvey, Miriam Hecht,

Eleanor Horenstein, June Kabaker, Jo Levy,

Simon (Sy) Newman, Jan Rosenthal,

Caron Rothstein, Alan Sherman, Joyce Singer,

Elisa Weger, Jack Wolinsky, Paul Woloshin

and Jack Zidell

### Vaults Now Available at the New Mausoleum



To purchase a vault or for more information please contact **Michelle Caplan**

at 503.293.7305 or [mcaplan@nevehshalom.org](mailto:mcaplan@nevehshalom.org)

### CLERGY VISITS

To assure that clergy make visits to congregants in the hospital, extended care facilities and hospices, please contact the office at Congregation Neveh Shalom: 503.246.8831. In an effort to comply with the new patient privacy laws, health-care facilities may not release the names of their patients; so it is imperative that you provide the name of the member, the facility name, patient's room number, length of anticipated stay, your relationship to the patient and a number where you can be reached if further information is needed.

## DAILY MINYAN

Zidell Chapel

Monday - Friday 7:15 am

Rosh Chodesh 7am

Sundays and Holidays 9:00 am

## SHABBAT November SERVICES

Friday, 6:15pm ONLY

Saturday Shabbat Services 9 am

## TOT SHABBAT

1<sup>st</sup> & 3<sup>rd</sup> Shabbat morning,

10:15 am in the Zidell Chapel

## SHABBAT SCHOOL

for 6th Graders

Every Shabbat

9:30am-12:15pm

## KEHILAT NOAR

1st -5th Graders

Youth Congregation

Every Shabbat

10:15 am Room 102

## DOWNSTAIRS MINYAN

2<sup>nd</sup> and 4<sup>th</sup> Shabbat, in the

Zidell Chapel

3<sup>rd</sup> Shabbat at the Robison Home

If you would like to lead the  
davening for Shahrarit, Torah, or  
Mussaf please call **Mark Sherman**,  
503.245.0571

## Cantors Notes



**SAFAM** is coming! Don't miss this concert on Saturday night, Feb. 7 at 7:30pm. Safam has been here twice before, in 1989 & 1993. That means that it has been more than 15 years since they were last here. Safam's music crosses many musical boundaries; they range from rock & roll to gospel to reggae and more. All of it is expertly done and in good taste with a large measure of fun included. Safam is definitely appropriate for all ages.

Safam means mustache and at one time they all had mustaches but no longer. Safam includes six fine musicians, two of which compose most of their music. Safam founding members are Cantor Robbie Solomon from Baltimore; Joel Sussman from Boston but grew up in Edmonton, Alberta; Dan Funk is from Newton Center, MA but grew up in Highland Park, NJ; and Alan Nelson from Framingham, MA. All of them have been involved with Jewish music for over 30 years. When you go to [www.safam.com](http://www.safam.com) you can learn more about these musicians and hear lots of samples of their music.

We have received some cds for our Women's League Judaica Shop that are now available but will be gone after the concert. There will also be an opportunity to buy books, recordings and other Safam paraphernalia at the concert.

Don't forget to vote for your favorite Safam song. So far, Leaving Mother Russia is winning. Whichever song wins will be performed at the concert. Don't let them leave out your favorite song.

Some of our Religious School students will be singing the Safam song, Just Another Foreigner at the concert. Remember, this is a benefit for both the Youth Programs and the adult Choir. Come support these two terrific causes.

*Continued page 14*

## Music:

Percy Bernstein

Orchestra Performance:

Friday, January 19, 6:15pm

Rehearsals:

Sundays, January 7, 14  
12:30pm

Other Rehearsals:

\*HaZamir Teen Choir\*

Sundays at the MJCC,  
12:30pm

\*Adult Choir\*

Mondays, each week from  
August to May  
7:30pm

\*Middle School Klezmer Band\*

Sundays, January 7, 14  
2:15pm

For more information contact Cantor Linda Shivers at [cantor@nevehshalom.org](mailto:cantor@nevehshalom.org)

## Yahrzeit Plaques: Lasting Memorials

A Yahrzeit plaque is a lasting tribute that ensures the memory of a loved one will be honored for all time. The purchase of a Yahrzeit plaque guarantees a permanent fixture in the Sanctuary plus a duplicate one that will be displayed on the Yahrzeit. Please contact **Michelle Caplan**, 503.293.7305, or [mcaplan@nevehshalom.org](mailto:mcaplan@nevehshalom.org). If you would like more information about this tradition and or about purchasing a plaque.

## Kindle the Sabbath Candles

Ba-rukha atah A-do-nay, e-lo-hay-nu me-lekh ha-olam a-sheer kid-sha-nu be-mitz-votav ve-tzi-van-nu li-hadlik ner shel Shabbat.

Blessed art Thou, O Lord our God, King of the Universe, Who has sanctified us by Thy commandments, and has commanded us to kindle the Sabbath lights.



**Eleanor Fischer  
Dial-In Service**

If you are unable to attend  
Shabbat services, dial in to hear  
them. Call 503.246.8832

## JANUARY CANDLE LIGHTING TIMES

Friday, January 2nd 3:58pm

Friday, January 9th 3:58pm

Friday, January 16th 4:00pm

Friday, January 23rd 4:04pm

Friday, January 30th 4:04pm



## Kol-ha-kavod

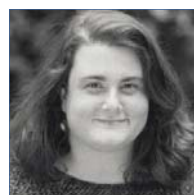
Every simcha is special. Congratulations to our many members who are celebrating in November. In particular, Mazel Tov to the following members who are celebrating special milestones!

### Milestone Birthdays

Robert Bach	Marvin Lazarus	Richard Peizner
Rosana Berdichevsky	Phil Levine	Betsy Rubin
Julie Brophy	Leonard Levine	Ann-Britt Sanderson
Gussie Cooper	Charles Levy	Trudi Stone
Moisey Fudim	Bruce Magun	Sophia Yablonkevich
Merilee Karr	Tatyana Mayler	
Albert Kryszek	Rebecca Mischel	

### Milestone Anniversaries

Leonard & Goldie Barde	Howard & Susan Rubin
Abram & Enya Kizhner	Leonard & Arnette Springer
Jeffrey & Dana Melnick	Peter & Joanne Wolochow



## Writers and Scholars in Residence

Rachel Brodie

January 30-31, 2009

Rachel Brodie is a Jewish educator who specializes in adult and family education. She is the co-founder and executive director of Jewish Milestones [www.JewishMilestones.org](http://www.JewishMilestones.org) a nonprofit organization serving as an educational resource for those who seek to have Jewish lifecycle ceremonies (typically related to birth, maturation, partnering and loss) that are both authentic and personally meaningful. She co-authored, *Jewish Family Education: A Casebook for the Twenty-first Century* with Vicky Kelman (Torah Aura, 2002).

Rachel Brodie is also the keynote teacher at the Women's Day of Jewish Learning on Sunday, February 1. Her focus will be on Women's Tefilah (or women's communication with God).

### Scholar in Residence Weekend Schedule:

**Friday, Jan. 30**

**6:15pm Kabbalat Shabbat Service**  
**Weekday Judaism: Work, Play And The Every Day**  
"What's so special about a rainy Tuesday in January?" From finding meaning in our work (whatever we may do, as long as it's legal) to the evaluation of our homes as sacred space, from how we handle money to our relationships to food and sex, Judaism offers us opportunities to go off auto-pilot and live mindfully. Explore the concept of "normal mysticism" in our tradition.

**Saturday, Jan. 31 (5th Shabbat combined services)**

**9:00am Shabbat Morning Service**

**12:30-1:30pm Lunch & Study Session -**

**Rosh Hodesh: It's About Time**

Good time management -- the Jewish way -- involves taking time on a regular basis to pause, reflect and rededicate ourselves to the priorities we espouse. Rosh Hodesh (the holiday marking the beginning of each new month) is one such "speed bump" in the Jewish calendar. Through text study and discussion rediscover this most "timely" of holy days and reconsider the challenge of leading a balanced life.

**HAVDALAH @5:30-8:00pm**

**Shoreshim Havdalah Family Event**

This session will combine teaching on brachot and havdalah.



### All-Member First Friday Dinner

All Member First Friday Dinner  
Friday, January 2, 7:15pm  
(following services)

Friday, February 6, 7:15pm (includes Mother's Circle & Havurot)

Join us after services for a kosher, family-style Shabbat dinner. Reservations required. \$14 per person, \$7 per child age 10 and under, \$42 limit per immediate household. RSVP by noon on the preceding Wednesday (Dec. 31, Feb. 4). For reservations after noon on Wednesday, a \$5 per person convenience fee will be charged. Family maximum applies to on-time reservations only. Call Rebecca at 503.246.8831x100, [rmoeri@nevehshalom.org](mailto:rmoeri@nevehshalom.org)

### Complimentary All Member

### "Light Shabbat Dinner"

All synagogue members are invited to a special Light Shabbat Dinner on Friday, Jan. 9 (no charge to members) immediately following services.

Please contact the synagogue office to RSVP by Wednesday, January 7th at 503.246.8831 or for more information contact **Michelle Caplan** at 503.293.7305 or [mcaplan@nevehshalom.org](mailto:mcaplan@nevehshalom.org)



### Israeli Movie Night

When: Sunday, January 25, 2009, 7-9 pm

Where: Stampfer Chapel, Congregation Neveh Shalom

2900 SW Peaceful Lane, Portland

Who: Anyone who enjoys foreign films, particularly an Israeli one

How: FREE and open to the public

Come see The Barbecue People

Co-sponsored by the Neveh Shalom Israel Affairs Committee and the Consulate General of Israel to the Pacific Northwest.

### Chronicle Submissions

Share your life-cycles events and accomplishments with your congregation.

Please e-mail submissions to [lkitchen@nevehshalom.org](mailto:lkitchen@nevehshalom.org)

### Deadlines

**February Chronicle-January 2nd**

**March Chronicle- February 6th**

**April Chronicle-March 6th**



## Havurah Profile: Empty Nester's Havurah

### Couples Havurah Takes Off at Neveh

At first it seemed like we were kids going to camp for the first time. Here we were, five couples, ten strangers with seemingly nothing more in common than being Neveh Shalom members interested in joining a havurah, assigned to a group and meeting for the first time. Would we like each other? Would we have fun? Would we want to see each other again?

After our first "Couples Group" meeting at Rose's Restaurant, it was clear to everybody that the answer was "Yes." We connected with each other, ate cheesecake, and learned more about each other. There were common interests and common backgrounds that we didn't know about before. We've since grown to seven diverse couples.

We've done a variety of fun activities. In July we demonstrated our cooking skills (or shopping skills as the case may be) with a potluck. In August, we combined the Jewish love of Chinese food with a Beijing Olympics viewing party. In September, we bonded with the best nature and the Northwest have to offer with a day trip to Silver Falls State Park. In October, we enjoyed an evening of dining in a Sukkah. In November, we once again enjoyed a dinner of Asian food (this time, Thai) and interestingly enough, wound up back at Rose's where it all began. In December, we were "up in the air" with our event - literally. We explored the Evergreen Aviation and Space Museums in McMinnville. Unlike camp, we are not over yet. We have our calendar planned for monthly Second Saturday meetings through mid-2009.

We all joined a havurah to expand our social circles, spend time with people whose company we enjoy, and nurture on our Jewish backgrounds and synagogue connectedness. We encourage Neveh members to form new havurahs or join existing ones. Yours, too, can be a personally rewarding experience, just as ours is so contact **Caron Rothstein**, Havurot Coordinator today at [crothstein@nevehshalom.org](mailto:crothstein@nevehshalom.org) or 503-246-8831 x 139 to get on board with Havurot!

--David Meltzer

## Vaad Shel Chesed Group

### Make a difference Become A Chesed Volunteer!



Chesed means the virtue of loving kindness. We are a growing group of dedicated volunteers who support our Neveh Shalom community by volunteering our time to help provide rides, meals and visits for members in need.

Come check us out and see first hand how our Chesed committee is working to support our NS members in need. Dedicating just one hour a month - truly makes a difference and an impact of a life time! The Chesed meets the second Sunday of every month at 10am in room 111 unless otherwise noted. For more information about the Chesed and how you can become a volunteer, please contact **Barbara Barde** at, 503-293-1222 or [Barb@bardepdx.com](mailto:Barb@bardepdx.com)

**Ben Hei Hei said:**

Effort is its own reward.

We are here to do,

And through doing to learn;

and through learning to know;

and through knowing to experience wonder;

and through wonder to attain wisdom;

and through wisdom to find simplicity;

and through simplicity to give attention;

and through attention to see what needs to be done.

Prike Avot 5:27

## Save the Date

Attention Young Men!

Outdoor adventures, Comraderie, Good food and Friends. Yachad Kick Off Event!

January 11th 2pm Look for event invite soon

For more info contact [NevehShalom-Yachad@Yahoo.com](mailto:NevehShalom-Yachad@Yahoo.com)

## Weekend In Quest 2009

February 27, 28 and March 1

Astoria, Oregon

"The Lives of Our Mothers and Fathers in Eastern Europe"

Our scholar is Natan Meir

Registration will open on December 22nd

For further information and to receive a registration brochure, please contact Mary Goldhammer 503 293-0521 or [mgoldham@comcast.net](mailto:mgoldham@comcast.net)



## Career Transition Group

Career Transition Group

Wednesdays, 7:45am

Over 80% of new positions are filled through networking. **Susan Goldstein**, an experienced career transition consultant and coach, will facilitate this no-cost networking group for individuals seeking to expand their network in specific industries,

organizations, communities, or jobs. There is no long-term commitment—attend when you can.

If you were caught in a recent layoff, are returning to the workforce, are a trailing spouse, recent graduate, or just ready to start looking for your next position—maybe a volunteer assignment for a rewarding retirement—your network is the best path to that next position. For details contact **JoAnn Bezodis** at 503.293.7309 or **Susan Goldstein** at 503.880.1473.



## Women's League Calendar

2008-2009

- January 22nd ●  
Book Review/Discussion
- January 23rd ●  
Women's League Friday Night Services
- February 8th ●  
The Sandwich Generation
- Anti-Semitism ●  
TBA
- The Art I Used To Love ●  
TBA

## Women's League Potluck & Planning Board Meeting dates below:

Wednesday, January 14, 2009, 6:30pm

Wednesday, February 11, 2009, 6:30pm

For more information please contact

**Susan Sutherlin** at 503.626.6611.



### Notes from Shomrei Teva

Climate Change, Obama, and  
Jewish Action

This month will be the inauguration of Barack Obama as our President. Among the huge number of problems his administration will address is climate change. As Jews, we have a particular concern about this issue because it addresses both social justice and care of creation. The Torah and Talmud constantly remind us that this is God's world and we must protect it. We are also reminded to care for the weakest among us. Climate change, and resultant rising sea waters, will mostly affect the poorer peoples of the planet.

The national Jewish environmental organization COEJL (Coalition On the Environment and Jewish Life) provides us with an easy way to take action on this matter by writing to President-Elect Obama. At the COEJL website you can find a letter that urges his administration to take immediate action on this problem. The letter also points out why, as Jews, we are taking this action and how this problem can be addressed. The webpage is at [http://engage.jewishpublicaffairs.org/t/2929/p/dia/action/public/?action\\_KEY=196](http://engage.jewishpublicaffairs.org/t/2929/p/dia/action/public/?action_KEY=196).

I invite each of you to go to that page, read the letter, phrase it in your own words, and send it to President-Elect Obama. As Jews we know that actions are more important than beliefs or creeds. Here is an action you can take as a Jew and as a concerned citizen of the world.

Todah rabbah from Shomrei Teva  
**Jordan Epstein**

Chronicle, No 4 5769/Page 6

## THE GLORIA BACHARACH JUDAICA SHOP AT CONGREGATION NEVEH SHALOM

December was an exciting month with the Shop formally dedicated in Gloria's honor made possible by a generous donation by the late Max Birnbach. We had a successful pre Hanukkah sale, and we donated candles, gelt, and havdalah candles to the religious school. We also donated cookie forms to the foundation school. Our mission is service to the synagogue and religious school and sales allow us to do this. We also participated in the Hadassah Hanukkah Fair.

New merchandise is arriving as we prepare for Purim and Passover. Jewelry by Devorah Beadworks is now in stock. Torah Fund cards appropriate for any event are in the shop.

We look forward to seeing you. For more information please contact **Sue Axel** at 503.297.9140 or **Ann Yudman** at 503.352.4074.



Elliot Axel, Sue Axel, Gloria Bacharach, Ann Yudman and Stu Yudman

On Saturday evening, November 22nd a Cocktail Party and Reception was held at the home of **Linda & Sid Alpert**; organized by The Board of Neveh Shalom Women's League. This "Special Evening" was held to honor **Sue & Elliot Axel** and **Ann & Stu Yudman** for their work, effort, time and commitment in organizing the new "Women's League Gloria Bacharach Judaica Shop at Neveh Shalom." Not only was there the physical "moving" of the existing Judaica Shop from its old location to its new one, but their efforts also included the complete redesign, reordering and restocking of all of the Judaica items. This was a tremendous effort on the part of these wonderful volunteers. As stated by Neveh Shalom Executive Director, **Fred Rothstein** "in Pirke Avot, the Ethics of our Ancestors, it is written..Say little and do much; and receive each person with a cheerful expression." This is what has been done and, all of us at Neveh Shalom say THANK YOU to The Axels and The Yudmans for a job well done and one which has exceeded all expectations.

## Feldstein Library

NEW ADDITIONS to the Feldstein Library:

**My Father's Paradise** by Ariel Sabar

The author invites the reader on an amazing journey through Kurdish Jewish History. It is a son's epic journey back to his father's homeland, a mysterious part of Iraq

**The Invisible Wall** by Harry Bernstein

A debut memoir, written by Harry Bernstein at the spry old age of 93. A wonderful historical document depicting the colorful characters of the small English mill town just before WW1.

**Who Will Write Our History: Emanuel Romgelblum** by Samuel Kassey

The author provides us with the history of the "Oyne Shabes Archive" a project organized in the Warsaw Ghetto by Emanuel Ringelblum to describe the Nazi measures against the Jews trapped in the Warsaw Ghetto.

**Icon of Evil :Hitler's Mufti and the Rise of Radical Islam** by David G. Dalin

**Ghettostadt:Lodz and the Making of a Nazi City** by Gordon J. Horowitz

A lucid, powerful and harrowing account of the Lodz Ghetto and the Nazi cruelty as compared to their grand delusions.

\* The above three titles were purchased through the generous donation of the Neveh Shalom's Mens' Club to the Feldstein Library

## Women's League



Be a part of Women's League. Together, we support the synagogue and the community.

Join us Friday, January 23 as we will celebrate our annual Women's League Shabbat. Our members will lead the Shabbat service. **Dana Sirkin** is coordinating this service. Contact Dana at 503.454.0610 if you would like to participate, in Hebrew and/or English.

Join us Sunday, February 1 for our always enjoyable Mah Jongg Tournament. **Judi Goodman** and **Sarah Coblens** will co-chair this event. Look for registration information to arrive shortly.

Join us Thursday, March 12 at 7:00 pm for a book review/discussion of The Faith Club by Ranya Idliby, led by **Rabbi Isaak**. This book is available at our Gift Shop. The date of this event has been changed to Thursday, March 12. Please be sure to note this change.

Do you need a house warming gift, a wedding present or do you just want to SHOP? Come visit our Gloria Bacharach Judaica Gift Shop. Volunteer with us and be a part of the wonderful new SHOP. Contact **Sue Axel**, 503.297.9140 or **Ann Yudman**, 503.352.4074 for more information.

A Todah Rabah to Jackie Lesch and our Men's Club for our joint program on Interfaith Families. This was an excellent program for all of us.

Join us for our Potluck & Planning Meeting Wednesday, January 14 at 6:30 pm at the home of **Addie Banasky**. Our meeting is open to all Women's League members/potential members. Bring us your voice, your questions and we will listen, this is YOUR opportunity to reach out to us. Contact me, 503.626.6611 for more information.

For more information, please contact **Susan Sutherlin** at 503.626.6611.

**Linda Alpert**, Past President of Neveh Shalom Women's League

## Mark Your Calendar

### Sunday, January 4th

9:30 (after Minyan) in the  
ZIDELL CHAPEL  
SHOMREI TEVA

Invites you to a presentation on the Tiv Ha'aretz Project.

The project will bring weekly deliveries of fresh, organically grown produce to the MJCC, a result of Neveh Shalom and Havurah Shalom leading the effort to make the Portland Jewish community part of this international project initiated by Hazon.

Our application has been approved and we're ready to go. Now we need members, people who will commit to purchasing a season's supply of produce from our local farmer in return for weekly deliveries. You could be one of those members. This presentation will explain all the ins and outs of the project, becoming a member, cost, and how this isn't just any CSA (community supported agriculture) but is specifically Jewish. We're not talking chopped liver here! Come and join us.

Questions? Contact **Jordan Epstein** at 503-245-6580 or [yaakovm@comcast.net](mailto:yaakovm@comcast.net).

## Darfur Awareness

### Neveh Shalom Says Never Again: Darfur Awareness Committee Update

With passion and initiative, members of our Tikkun Olam Committee's Darfur Awareness sub-committee joined together for the first time in November and committed our group to the mission of raising awareness among youth and adults in our community about the tragic genocide currently taking place in Darfur. Our goal is to raise general awareness of the situation through a community wide book reading and discussion, to engage our youth through a hands-on educational experience (such as Camp Darfur), and to participate in advocacy through sending postcards to powerful elected officials including President-Elect Barack Obama. We are working together with Beth Israel and Kol Shalom, among others, to unite the Portland community around this important cause. It's not too late to let your voice be heard; we'd love you get involved in any capacity you're interested in. Look for our next meeting posted in the weekly announcements (probably the 3rd Wednesday of January) as well as a kick-off event coming soon.

Contact **Sarah Greenstein** at [greenstein\\_sarah@yahoo.com](mailto:greenstein_sarah@yahoo.com) with questions or to get involved.

## Men's Club



On behalf of the Men's Club, Bruce and I would like to wish you Happy secular New Year.

We would like to thank Tyson Campbell from Kennedy Restoration and **Rick Vagy** for their informative November program on the perils of home ownership. Additionally, we would like to thank all those who participated in the Men's Club Shabbat on November 14, with a special thank you to **Peter Bedrick** for organizing the service. We would also like to thank the 10-15 people who volunteered to help pack care packages for our troops in Iraq and Afghanistan. Your efforts were greatly appreciated.

Our January program will take place on Sunday, January 11. The topic is "Alternative Energy Concerns". It is an opportunity for you to learn how to reduce your energy footprint. We will meet in the Zidell Chapel for brunch after the morning minyan around 9:40am with the program starting at 10am. Men and Women are welcome at our programs.

Don't forget our second annual Texas Hold 'Em Tournament on Sunday, March 1. Proceeds are donated to youth scholarships and the capital campaign. If you are interested in being a sponsor or donating prizes, please contact **Bruce Stern** at [bruce@thesternfamily.net](mailto:bruce@thesternfamily.net). If you know someone else who might be willing to contribute a prize or a sponsorship, Bruce can let you know what information we need.

Additionally, a group of Men's Club members volunteers at the Oregon Food Bank on the fourth Thursday of each month. Please contact **David Sibell** at [sibelld@ohsu.edu](mailto:sibelld@ohsu.edu) if you are interested in helping.

If you would like to join Men's Club, please contact our membership chairmen, **Larry Skolnik** [lsskolnik@hotmail.com](mailto:lsskolnik@hotmail.com) and **Jeremy Kelter** [timberlineadvisors@comcast.net](mailto:timberlineadvisors@comcast.net)

We also have membership forms available on our bulletin board in the synagogue. You may also contact either of us at [bruce@thesternfamily.net](mailto:bruce@thesternfamily.net) or [j3ngoodman@comcast.net](mailto:j3ngoodman@comcast.net). **Joe Goodman** and **Bruce Stern** Men's Club Co-Presidents



## Shalom Neveh Families!

What a wonderful and exciting fall we have had! A new building with a new youth lounge, as well as awesome activities and most importantly, good friends has made this a season to remember for Neveh Youth Activities! Our advisors and leaders have done an incredible job providing fun, safe and engaging events for all of our youth, from 3rd through 12th grades! We have bowled, skated, hiked, laughed and played all over town, and have begun to "break in" our new improved home (don't worry, we haven't actually broken anything). A highlight of the fall has definitely been our annual "Parents Night Out" in December, which brought a large crew of kids from all ages to hang out with their Neveh buddies and awesome USY teen leaders, while their parents got to go out and have a night on the town! We had a blast playing, snacking and laughing the night away. We can't wait to do it again!

Now that we are heading into the dark winter months, it is a perfect time to get out and hang with your Neveh Shalom friends! Just as Hanukkah taught us that a small flame can light up dark times, so can just one great Jr. Kadima, Kadima or USY event brighten up the cool winter months. We have great activities planned, with sporting events, overnights, movies, bowling, parties, service projects, great food and don't forget friends and fun! And don't forget to stop by and check out our youth lounge, officially the most comfortable room in the new building (thanks to our comfy new couches). So come warm up your winter with Neveh Shalom Youth Activities!

**Jonathan Emanuel**, Youth Director [jmanuel@nevehshalom.org](mailto:jmanuel@nevehshalom.org)

## USY (9-12th grade)

USY's 5th Semi-Annual Parents' Night out was a huge success. Thank you to all of the USYers, parents and kids for taking part in such an exciting evening full of Jewpoardy, candy sushi and capture the flag.

**Rachelle Vagy**, USY Advisor  
[usy@portlandrishonim.org](mailto:usy@portlandrishonim.org)

## Kadima (6-8th grade)

Kadima's first few months have been a ball. We have roller skated, bowled, had an overnight, an arcade day and made many new friends. December saw Kadima join in the Fifth Annual Parents Night Out helping the USYers plan and run programs for Junior Kadima. We also went to a Trailblazers game!

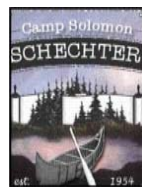
Following Winter Break, we have many exciting programs planned including an amazing collage project, an "Eighth Grade Only" special program, a trip to Portland's Art Museum, and an outing to the Clackamas Water Park.

Kadima is open to all 6th-8th graders and even if you have not yet come to a program, try it out! You will not be disappointed. **Cara Buchalter Emanuel**, Kadima Advisor at [kadima@portlandrishonim.org](mailto:kadima@portlandrishonim.org)

## Jr. Kadima (3-5th grade)

Many times, Happy New Year from Jr Kadima! We hope you're staying healthy and enjoying this winter season! Coming up on the 11th we're going to a Portland Winterhawks game! Don't miss this incredible tradition! Parent volunteers welcome! In early February we are looking forward to an outdoor Tu B'Shvat activity where we can grow as a group and give back to the community! A big thank you for all your creativity and support---it's going to keep Jr. Kadima as fantastic as ever during these tough times.

B'Shalom **Becca Cigan**, Jr. Kadima Advisor  
[jrkadima@portlandrishonim.org](mailto:jrkadima@portlandrishonim.org)



## Camp Solomon Schechter Scholarships

Applications for scholarships for the 2009 summer sessions of Camp Solomon Schechter are available in the synagogue office. The synagogue has a number of tribute funds from which scholarship monies come.

These funds can be contributed to in honor of happy occasions or in memory of a loved one. Check the tribute pages of the Chronicle for names of the funds.

Because of the limited nature of the funds available, full scholarships cannot be given. Scholarships are given on the basis of need only, not merit and an explanation of need is necessary for funds to be allocated.

Please contact **Michelle Caplan**, 503.293.7305 or [mcaplan@nevehshalom.org](mailto:mcaplan@nevehshalom.org) to obtain a scholarship application or for further information. Applications must be submitted by February 20, 2009 in order to be considered.



The Mothers Circle program, coordinated by **Caron Blau Rothstein** and facilitated by Neveh Shalom member **Lois Shenker**, is entering its third month of classes, and appears to be receiving rave reviews. We even made the front page of the Oregonian's How We Live section last month and are already receiving requests for the next cohort! The eighteen participants are non-Jewish women with Jewish partners who have agreed to raise their children in the Jewish tradition. The course is designed to give them support, education, and increase their comfort level with the Jewish experience in order to be better able to share it with their children.

The sessions so far have covered Getting Acquainted, Making Jewish Choices, Hanukkah, Effective Jewish Parenting, and Jewish Values. Each session is a combination of information, questioning, sharing, group exercises, and practicing the skills being taught, where appropriate. In addition to the regular classes, there will be some "hands on" classes coming up which will add partners and/or families to the group, and in some instances these programs will be open to the community. Already on the agenda is an erev Shabbat service and dinner here at the synagogue on February 6. Watch for announcements of community events under Mothers Circle sponsorship coming up in the future.

If you or someone you know is interested in the Mothers Circle please contact **Caron** at [crothstein@nevehshalom.org](mailto:crothstein@nevehshalom.org) or log onto [www.themotherscircle.org](http://www.themotherscircle.org).





## Neveh Shalom Babies

Babies are Busy this Winter! First Babies Events

The First Babies Group celebrated at the Neveh Shalom Hanukkah Hoedown together. They enjoyed eating, singing and lighting menorahs with their babies.

### All New Babies get honored at upcoming Shabbat

Coming up on Saturday, January 10th, all new babies born since November 2007 are invited along with their parents and grandparents to join in the New Babies Shabbat celebration on Shabbat morning. For further details check out the special info box elsewhere in this Chronicle or contact **Caron Blau Rothstein** [crothstein@nevehshalom.org](mailto:crothstein@nevehshalom.org) or 503-246-8831 x139 for more information or to RSVP.

### Playgroup

Our FREE drop-in playgroup is meeting Friday mornings from 9-10 am in the large motor room at Neveh Shalom. First Fridays include a special guest from CNS Staff. Thank you to our December special guest, Program and Fundraising Director **JoAnn Bezodis** who taught all the little ones an adorable Hanukkah song. All tots ages 0-2 years welcome with a parent or caregiver - come and play!!! Note: There will be no playgroup on January 2.

### Parent Workshop

On December 4, Rabbi Bradley Greenstein and family clinician, Rita Smith, from Jewish Family and Children Services, led a workshop on the "December Dilemma." They addressed the topic of holiday commercialism and the age old Hanukkah vs. Christmas challenge.

Thank you so much to **Rabbi Greenstein** and Rita Smith for working with our families!

For more information on any of our upcoming events, please contact **Sarah Mitnick** at [mitnick.sarah@gmail.com](mailto:mitnick.sarah@gmail.com) or **Hilary Barthold** at [hiltim@aol.com](mailto:hiltim@aol.com). Thanks!!



## Shoreshim

Even our youngest members greeted their partners, did a little do-si-do, and promenaded all the way home at the Hanukkah Hoedown on December 21, 2008! Thank you to all the volunteers on the Shoreshim and Membership committees who helped to make this such a fun event!

If your children were mesmerized by the Hanukkah lights and asking why the menorah had to be put away...remind them of the beautiful Havdalah candle. Shoreshim is hosting its popular, "Good Night Shabbat!" Pajama Party and Havdalah dinner event on Saturday, January 31. While the kids are listening to stories, adults are invited to attend a talk by guest speaker/teacher, Rachel Brodie,

the director of Jewish Milestones, a nonprofit aiming to make the ritual more accessible to families. Get the year off to a good start at Tot Shabbat Services on the first and third Saturdays of the month. Services start at 10:15am. Services on January 3 will be led by **Jordan Epstein**, and on January 17 by **Levia Friedman**.

For questions about Shoreshim or information on how you can get involved, please contact **Cyndy Kagan** at 503-927-4326, [ckagan@gmail.com](mailto:ckagan@gmail.com), **Debbie Plawner** at 503-830-3833 [debbieplawner@yahoo.com](mailto:debbieplawner@yahoo.com), or **Leslie Solomon** at 503-350-0993, [leslie@solomonster.org](mailto:leslie@solomonster.org)



## Foundation School

Foundation School is happy to welcome everyone back to school following our winter vacation. We hope all the families had time to slow

down and enjoy some peaceful moments while lighting the Hanukkah candles together. The month of January will find the children embracing the season of winter. Stories and songs about sparkly snowflakes whirling and fat snowmen melting will enrich the curriculum. We will discover how water changes from liquid to solid ice and talk about what animals do in the winter. Please be sure you dress your children warmly for outside play as we go out everyday.

Even in the midst of winter we will begin to look towards spring at the end of the month as the Jewish holidays of Shabbat Shira, the birthday of the birds, and Tu B'Shvat, the birthday of trees, approaches. Children will make bird feeders, create with feathers and pretend to be birds hatching from eggs. Seeds will be planted, branches studied, and the importance of trees to our world will be emphasized. In the words of Rabbi Yohanan Ben Zakkai, "If you should be standing ready to plant a tree when the Messiah comes, first plant the tree, then go and meet the Messiah."

Shalom,

**Jan Skolnik & Kathy Wolfson**

## Religious School



The Jewish people and their music have their roots in the Middle East. We have lived, for over 2000 years, amongst many cultures, from Iran to Israel, to the Western Mediterranean and North Africa, to Europe, and most recently, the Americas. Thus, there is a unique property of Jewish music that defies geographical location. Certain Jewish ritual musical forms have their sources in antiquity, but the idea of creative adaptations has been the hallmark of Jewish musical life for a very long

time; thus Jewish music has many faces.

Recently, Jewish music has begun to see a fairly significant change. Now it is no longer of yesterday. It is going in a new direction. While the roots of traditional Jewish music can still be heard, the music has grown past the traditional music and gone off in a new direction. Safam, the Boston based band, has dominated Jewish music in America with their "Jewish-American Sound" since 1974. Safam's music covers the wide breadth of American musical styles while maintaining a Jewish flavor. They use many settings – whether it be Rock & Roll, Pop, Folk, Latin, Chassidic or Cantorial – to create their tapestry of music. Safam's eclectic approach to its music has enabled it to reach out to Jews of all ages and denominations.

Neveh Shalom is excited to have Safam come to our congregation on Saturday, February 7th for an unforgettable concert. Mark your calendars and purchase your tickets early.

**Susan Bernstein**, Director of Education

## Adult Ed

### Wellness Talks, "The Light of Day: Help for Winter Mood Changes"

Wednesday, Jan. 14, 7:00pm

**Instructor: Dr. Christie Winkelman, ND, MA (counseling)**

What exactly causes those winter blues, and what can you do to help yourself enjoy more energy and more motivation this winter? Join us for an interactive discussion that is especially pertinent to our NW location! Dr. Winkelman also will offer examples of some helpful items and treatments for you to sample yourself. Dr. Winkelman practices at Insights to Health ([www.insightstohealth.net](http://www.insightstohealth.net)), the new Jewish-friendly holistic family medical clinic in Multnomah Village. Free and open to the entire community--bring a friend! RSVP to help us plan for materials: call Rebecca at 503-246-8831x100. **What is Conservative Judaism?**

**Instructor: Gary Fiske**

Thursdays, Jan. 15-Mar. 5, 7:30-9:00 pm

For most of its existence Conservative Judaism has been defined by what it is not: not Reform, not Orthodox. But what is it and how does it differ from other forms of Judaism? The course will begin with a brief history of the American Conservative movement starting with its origins in 19th-century Germany. The remainder of the course will be devoted to discussions of more contemporary documents that can give us a sense of how the modern-day movement is attempting to define itself. Among other things, we will look closely at different sections of *Emet ve-Emunah*, the Conservative movement's Statement of Principles published in 1988, as well as at several recent *responsa* issued by the movement's Committee on Jewish Law and Standards.

**Tuition: no charge.** For more information, contact Gary Fiske at [migarada@comcast.net](mailto:migarada@comcast.net).

### Adult Hebrew Class for Beginners

**Instructor: Vered Tzur**

**Tuition: \$120 for CNS members and \$160 for non-members**

Tuesdays, January 6-March 10, 6:45-7:45pm

Hebrew is the glue which binds the Jewish people in Jewish communities dispersed throughout the world, and time, from the past to the present and on to the future. Language is the key to a nation's heart and soul. Come learn Hebrew for the first time or refresh your knowledge from your childhood. Learn the basic vocabulary, use of verb constructs, nouns, pronouns and prepositions. This is an excellent opportunity for parents to learn to read and decode Hebrew; feel more comfortable opening the prayer book and in helping your children with their Hebrew School experience. For information, contact Susan Bernstein at 503.293.7306 or [sbernstein@nevehshalom.org](mailto:sbernstein@nevehshalom.org).



## Shomrei Teva

Of Neveh Shalom Invites You To

Tu b'shvat with teva: Planting our garden

Sunday, February 1st, 9am-12pm

Shomrei Teva, Neveh Shalom's environmental team, has joined with SOLV to repair the natural area along the tributary of Fanno Creek bordering the Neveh Shalom parking lot.

We're going to plant beautiful native trees, shrubs, and ground cover as we restore this riparian habitat. Our planting is the reward for months of hard work as we removed non-native plants and debris from the site. Now we can plant and celebrate.

As part of the morning's activities we'll provide refreshments and a short ceremony to honor our work, the earth, and connections to Tu b'Shvat.

We will provide shovels (supply limited) and other tools as well as gloves. But please bring your own tools and gloves if you have them and DRESS FOR THE WEATHER. Come celebrate Tu b'Shvat the "earthy" way.

Questions? Contact **Jordan Epstein** at 503-245-6580 or [yaakovm@comcast.net](mailto:yaakovm@comcast.net)

Continued from page 1

We are very excited that he has agreed to continue his work here for another 5 years. Certainly the economic environment in which we find ourselves is presenting many challenges. Its impact can be seen in everything from the rate at which we are receiving Capital Campaign commitments and dues payments to the cost of food served at the Oneg. The Board has been proactive in addressing the issues involved and is planning accordingly. To state the obvious, we are preparing to do more with less. The staff has been directed to significantly reduce expenses, while attempting to minimize their impact on the services they provide. It is hard to estimate exactly what the impact of these reductions will be, but I think it is safe to assume they will be felt to some degree. We will need more volunteers to help mitigate the impact of these reductions, and I urge you to consider helping out in any way you can. If you haven't done so consider being active with one of our committees, all of which are in need of additional volunteers. I will keep you updated on our financial situation throughout the year as it develops, and I encourage you to attend one of several Budget Committee meetings which will be held over the coming months. These meetings are open to all congregants and will give you real insight into the running of the synagogue and its many programs.

This time of year is very busy, but I hope you have the opportunity to spend time with your friends and family and let them know how much they mean to you. I'd like you to know how much I appreciate the support and encouragement you have given the Board and myself, and how dedicated we are to providing our members with the best possible experience. We wish you a special Hanukkah and a Happy New Year!

**Doug Lenhoff, President**

## Did You Know...



The two concrete structures in the lower parking lot and one in the lower courtyard, while shaped differently are "flow through planters", also called "bio swales or rain gardens". They are environmental amenities that filter storm and other water from the site and return it to the storm system cleaner than it started. The plans are to irrigate the plantings by hand the first year. With the selection of native planting, manually watering the landscape will only be necessary for the first year and will otherwise survive on natural rainfall.



## Membership Committee

My membership at Congregation Neveh Shalom has been all about community. When I come to a Membership meeting or a Blood drive or any social event at CNS or when I simply am dropping **Maude** off at Sunday school, it turns into an event of chatting with my CNS family and getting caught up with their lives. I'm always so thrilled with how comfortable Maude is when she is here; running around like it is her second home. Our journey to this point has been a big circle. When **Nicole** and I first moved here from the East Coast 16 years ago, one of our first priorities was to join a Synagogue. I grew up and loved my Synagogue and USY in Connecticut, so I naturally wanted to join the Conservative Synagogue. We started with CNS and had a difficult time connecting due to no children and our young age. We tried many other Synagogues, and then after bringing Maude to Tot Shabbat a number of times, realized that we knew and were friends with so many people at CNS, that this was our home. We started our Havurah and they are our family. I feel strongly that with the Membership Committee, I am able to connect people with CNS and help them feel welcome and help them feel the sense of community I feel every time I drive up to the Synagogue.

**Mitchell Elovitz,**

Membership Committee Member

If there's anything myself or our committee can do to help you feel more connected, please email me

elovitzclan@comcast.net



## Kehilat Noar (KeN:Youth Congregation)

Meets every Saturday morning at 10:15

A lively, warm, and fun service that includes music, storytelling, and drama.

Geared towards 1st-5th graders.

All who love them are welcome to attend as well!

Led by **Gary Liberman** and **Amy Katz**



Followed by kiddush.



## Senior Lunch Bunch

Lunch Bunch for 65+ Tuesday, Jan. 13, 12noon

The Lunch Bunch invites you to join us Tuesday, January 13, for lunch, followed by a film, "The Fifth Commandment" (see the review below). Enjoy a spectacular KOSHER lunch for only \$5 per person (55 and up) – reservations required. Save the date and plan to join us. RSVP by noon on Monday, January 12 to Rebecca Moeri in the office at 503-246-8831 ext. 100 or [rmoeri@nevehshalom.org](mailto:rmoeri@nevehshalom.org).

"The Fifth Commandment"

Director Shimon Azulay came from a "traditional" family, where family unity always was paramount. Shimon's retired parents' world revolves almost exclusively around the children and grandchildren. When the director's brother becomes religious, the delicate fabric that holds this family together begins to unravel. In spite of the tremendous gaps that now exist, the Azulays struggle to keep the family united. A Powerful study...45 minutes.

## Give Your Child the Gift of a Good Beginning!

Preschool/Day Care Registration Began in January for the 2009-2010 School Year



### Congregation Neveh Shalom Foundation School

#### Early Childhood Jewish Education

- Morning Classes 9-11:30 am for children ages 2-5
  - Playgroup 2 year olds
  - Preschool 3
  - Pre-Kindergarten
- Afternoon care daily until 3 pm
  - Early care starting at 8 am
  - Kosher lunches



Licensed by the State of Oregon

In our effort to serve congregational families, we will offer you space in the school if it is available. Please call by Feb. 1, 2009 to put your child on the wait list.

Contact Jan Skolnik at 503-293-7307, ext 122 or [jskolnik@nevehshalom.org](mailto:jskolnik@nevehshalom.org)



יום טוב יפה מאד

# Dead Sea Spa Day

A warm and wonderful event of luxurious spa treatments for you and your friends benefiting Kochavim & Notz'tzim Hebrew Immersion Programs.  
Sunday, January 11th at the Stafford Boutique Vitality Center in Lake Oswego.

*How it works:*

Invite a group of 8-10 friends (your family, your friends, your Havurah...) to join you in transporting yourselves from cold, wet Portland to a warm, relaxing and reinvigorating spa experience of yoga, hand and foot massage, and luxurious hot tub soak, followed by delicious Middle-Eastern refreshments.

Contact Mel Berwin at [michaelvmel@gmail.com](mailto:michaelvmel@gmail.com) or by phone: 503-452-6890 to reserve your 90 minute Dead Sea Spa timeslot for your group (or to be connected with others to form a group), starting anytime between 10am and 4pm on Sunday, January 11.

Reserve by December 19 to receive a Dead Sea Spa gift bag worth \$25.  
Send a check to Neveh Shalom to confirm your reservation.

Suggested donation per person: \$70-100.  
100% of your donation is tax-deductible and benefits Kochavim and Notz'tzim.  
Be ready to relax and enjoy the warmth and luxury of your Spa experience!

*A huge thank you to The Stafford for donating their beautiful space, and to Lucie Flood and Rachel Stern for serving as Yoga instructors. Todah Rabah to Lora & Jim Meyer and Goldie & Joshua Stampfer for their generous support of Kochavim & Notz'tzim this year.*



## Tuv ha'Aretz Project

The Tuv Ha'aretz project, initiated by the national Jewish environmental group Hazon, enables the Jewish community to support local, sustainable agriculture. Would you like weekly deliveries of fresh, locally and organically grown produce? Would you like to learn more about Community Supported Agriculture (CSA) and how it connects to Jewish teachings and traditions? For more information, contact **Jordan Epstein** at yaakovm@comcast.net

## Shomrei Teva Creek Side Restoration

3rd Sunday each month  
January 18, 9:00am  
Neveh Shalom, through Shomrei Teva, has joined with SOLV to restore the area along the tributary of Fanno Creek that borders the Neveh Shalom parking lot. Come join us the third Sunday of every month at 9:00am to do maintenance at our site. We work for an hour or two clearing away new or existing growth of weeds and non-native plants. Bring a shovel (best) or other garden tools. We'll supply the gloves. It's a mitzvah! Contact **Jordan Epstein** at 503.245.6580 or yaakovm@comcast.net

## Southwest Community Health Center -- SW Walks for Health

January 11, 2:00pm (monthly)  
Get in shape and support a great cause. Neveh Shalom is one of the many sponsors in support of the SW Community Health Center. Join these monthly walks and select a one, three, or five mile route. We begin at the Multnomah Arts Center on Sundays at 2pm. Monthly dates include: Feb. 8, Mar. 8, and culminating in our Fundraising Walk-a-Thon on April 19th, supporting the Health Center.

## Beds! Beds! Beds!

Community Warehouse needs your donations of twin, double and queen mattresses & box springs. Over 65 local families come each week to the warehouse for help with essential furniture and household items. Especially as the cold weather approaches, the warehouse needs more help providing for families who are sleeping on the floor. Please go online to [www.communitywarehouse.org](http://www.communitywarehouse.org) or call us at 503-235-8786 to donate. We are open every day at 2267 N Interstate or ask for a pick up.



## Food Barrels

Food Barrels  
Neveh Shalom has two food barrels benefiting Neighborhood House and the Sunshine Pantry.

Bring in your non-perishable food items to the barrels located outside the Zidell Chapel and in the Religious School hallway. Most needed items include: rice, pasta, juice, baking products, dry milk, ramen, and macaroni & cheese. Thank you for your generosity!

## Bar Mitzvah Suit Closet Reduce – Reuse – Recycle!

Yossi's Closet is now stocked and ready for sharing. Bring in your rapidly growing boy to borrow a suit for any synagogue occasion. We have a number of shirts, pants, shoes, and suits that are ready to be loaned out. We only ask that you dry-clean any borrowed suit before returning it.

This suit closet benefits those in need AND lets us recycle through re-use. We accept donations of suits in "like-new" condition, including shirts and shoes as well. If you have something to contribute, or if you would like to check out our collection for your own son's use, please call **Stephanie Arnheim** at 503-539-2602 or [stephanie@equityhs.com](mailto:stephanie@equityhs.com)

## Support Neveh Shalom while shopping!



Got an Albertson's Card or Safeway Card? Name Neveh Shalom as your Community Partner and a portion of all your purchases will support the synagogue. This does NOT cost you any money, so it's WIN-WIN! No computer skills necessary. Send **JoAnn Bezodis** the following information:

Name

Albertsons or Safeway Card Number

Phone number associated with this card.

She will do the rest! Contact **JoAnn Bezodis** at [jbezodis@nevehshalom.org](mailto:jbezodis@nevehshalom.org) or call 503-293-7309.

## 13 MITZVOT

in memory of  
Zvi Bandel  
Steven, Wendy, Rebecca & Michael Kahn  
**BANASKY FUND 2009**

in memory of  
Rebecca Zukeov  
Frieda Tobin  
**BECKY MENASHE FUND 2009**

in honor of  
Jerry Marger's speedy recovery  
Sol E. Menashe  
in memory of  
Ezra Menashe  
Sol E. Menashe  
Jacob Menashe  
Sol E. Menashe  
Joya Menashe  
Sol E. Menashe  
Rebecca Menashe  
Sol E. Menashe  
**BERG CAMP FUND**

in memory of  
Mildred Sax  
Eva Levy  
**BUDNER BOOKSHELF FUND 2009**

in memory of  
Bess Budner  
Alan and Diane Budner  
**CAMP SOLOMON SCHECHTER FUND**

in appreciation of  
Joy and Peter Epstein  
Thelma Geffen and Harry Wilson  
in memory of  
Mildred Sax  
Sandra Landskroner  
**CANTOR MORRIS AIL MUSIC FUND 2009**

in memory of  
Bertha Ail  
Rob, Emily, Nathan and Michael Ail  
**CANTOR'S DISCRETIONARY FUND**

in appreciation of  
Cantor Shivers  
Marion Lefkowitz  
in honor of  
Susan Cardoni's Rosh Hashanah Aliyah  
Susan Cardoni

in memory of  
Kate Freda Shapiro  
Glenn and Martha Decherd

## CAPITAL CAMPAIGN DONATIONS

in honor of  
Rabbi Isaac  
Jacob and Helen Serling  
Cantor Shivers  
Jacob and Helen Serling  
Adam Yoelin  
Garry and Judith Kahn

in memory of  
Muriel Friedman  
Rick and Sharyl Vagy  
Howard Gilliam  
Paul Gilliam  
Esther Jaffee  
Doreen Gilliam  
Walter Jaffee  
Doreen Gilliam  
Zalie Cordova Lester

# The congregation gratefully acknowledges the following contributions:

Jonathon and Elaine Lietz and  
Coughlin Lietz  
Rick and Sharyl Vagy  
Rita Pearlmuter  
Stanley Constantine

**CEMETERY FUND**  
**in honor of**  
Leonard and Goldie Barde  
Earl and Dale Oller  
Min Zidell's special birthday  
Earl and Dale Oller  
**in memory of**  
Reuben Glickman  
Nettie Maizels  
Richard Lindenberger  
Leah Lindenberger

**CHAI/TIKKUN OLAM FUND**  
**in memory of**  
Rose Lippoff  
Bari Isaacson

**CHARACK KITCHEN FUND 2009**  
**in memory of**  
Lillian Sherman  
Allan Sherman

**COOKIE YOELIN FLORAL FUND**  
**in honor of**  
Adam Yoelin's engagement  
Jerome and Shirley Nudelman  
**in memory of**  
Sam Yoelin  
Merritt Yoelin

**ELEANOR FISCHER DIAL IN FUND**  
**in honor of**  
Elanor Fischer's birthday  
Rosalie Lesch

**ELEVATOR FUND**  
**in memory of**  
Owen Thomas Berlant  
Robert and Carol Ginsberg  
Beatrice Chusid  
Norman and Kathy Chusid  
Mildred Sax  
Robert and Carol Ginsberg  
Esther Stone  
Robert and Carol Ginsberg  
Esther Volchok  
Alice Potter

**FELDESTINE LIBRARY FUND**  
**in memory of**  
Lee Cordova's sister  
Jerry and Gayle Mager  
Muriel Friedman  
Randy Katz and Peter Wigmore  
Ruth Leveton  
Lillian Weiner  
Jack Paige  
Joann Ruden

**FOUNDATION SCHOOL FUND**  
**in memory of**  
Owen Berlant  
Irving and Arlene Potter  
Charlotte Cohon  
Richard and Roberta Cohon  
Stephen Leopold  
Irving and Rhoda Leopold  
Morton Mendelsohn  
Benjiman and Jeanette Philan  
Irving Neusihin  
Bernice Resnikoff  
Stanford Nudelman  
Richard and Marilyn Lakefish  
Esther Stone  
Esther Ritchie  
Esther Ritchie

Denny Weinstein  
Randi McLenithan  
Al Westerman  
Sondra Greenberg

**GLADYS & JOSEPH FENDEL CAMP FUND**  
**in memory of**  
Isadore Kaufman  
Bruce and Sheila Stern  
Jack Ritchie  
Brauna Ritchie  
Reuben Stern  
Bruce and Sheila Stern

**HAZAK/SENIORS**  
**in memory of**  
David Papper  
Jack and Melanie Birnbach

**HUNGER RELIEF FUND**  
**in memory of**  
Sam Benton  
Julie and Shelley Siegel  
Lee Cordova's sister  
Gary and Sylvia Pearlman

**KIRSHNER MEMORIAL FUND 2009**  
**in memory of**  
Rae Kirshner  
Esther Bodner-Israel  
Anita Gold

**LEONARD BARDE CEMETERY ENHANCE FUND**  
**in honor of**  
Leonard and Goldie Barde  
Larry and Carolyn Gorin  
Lawrence and Sandra Huppin  
**in memory of**  
Irving Neusihin  
Lucille Neusihin  
Mildred Sax  
Larry and Carolyn Gorin

**LESCH CAMP FUND**  
**in appreciation of**  
Gabe Markiz  
Rosalie Lesch  
**in honor of**  
Aiden Joseph Cohon's birth  
Rosalie Lesch  
Richard and Roberta Cohon's new grandson  
Rosalie Lesch  
Anthony and Priscilla Kostiner's anniversary  
Rosalie Lesch  
Ravi Davis Weinrobe's birth  
Rosalie Lesch  
Charles Wolf's speedy recovery  
Benjiman and Jeanette Philan  
**in memory of**  
Abe Lesch  
Rosalie Lesch

**LOUIS ROSENBERG BOOKSHELF FUND 2009**  
**in memory of**  
A.E. Rosenberg  
Toinette Menashe

**MARK AIL CAMPERSHIP FUND**  
**in memory of**  
Mark Ail  
Marsha Parks

**MILT HORENSTEIN MINYAN FUND**  
**in honor of**  
Adam Yoelin and Ann Bailey's engagement  
Howard and Petra Shapiro

Leonard and Elayne Shapiro's new twin grandsons  
Howard and Petra Shapiro  
**in memory of**  
Lee Cordova's sister  
Howard and Petra Shapiro

**MONTROSE VIDEO FUND**  
**in memory of**  
Dorothy Jackson  
Hy and Myra Jackson

**MOSKOWITZ 2009**  
**in appreciation of**  
Ella Ostroff  
Mary Goldhammer  
**in honor of**  
Shoshana Bean's CD album release  
Felice Moskowitz  
**in memory of**  
Larry Alberton  
Riley and Marci Atkins  
Felice Moskowitz  
Patty Lenhoff's aunt  
Harry and Mary Goldhammer  
Sylvia Moskowitz  
Felice Moskowitz

**MOSLER CAMP FUND**  
**in memory of**  
Estelle Kobin  
Susan Overbeck

**MURIEL & JOSEPH UNKELES CHOIR FUND**  
**in memory of**  
Joseph Unkeles  
Muriel Unkeles

**MUSIC LIBRARY FUND**  
**in memory of**  
Beatrice Pearlman  
Walter Froehlich

**PRAYERBOOK FUND**  
**in memory of**  
Zalie Cordova Lester  
Ron and Marcy Morris  
Janet Menashe's father  
Michelle Stein and sons

**RABBI GREENSTEIN DISCRETIONARY FUND**  
**in appreciation of**  
Rabbi Greenstein  
Jeff and Jennifer Weprin  
**in honor of**  
Rabbi Brad and Sarah Greenstein  
Rosalie Lesch  
**in memory of**  
Zalie Lester  
Lee Cordova

**RABBI STAMPFER DISCRETIONARY FUND**  
**in honor of**  
Larry and Sandie Huppin's special anniversary  
Bari Isaacson  
Arden Shenker's birthday  
Diane Solomon

**RELIGIOUS SCHOOL FUND**  
**in memory of**  
Eugene Hyatt  
Earl and Elaine Mooso  
Irving Neusihin  
Lisa Neusihin

**ROBBIE BALL MEMORIAL FUND**  
**in honor of**  
Elaine Ball's birthday  
Earl and Dale Oller

**SAPERSTEIN CHAPEL FUND**  
**in honor of**

Caron Rothstein's speedy recovery  
Jay, Rochelle and Joshua Leisner  
**in memory of**  
Judy and Stan Blauer's mother  
Jay, Rochelle and Joshua Leisner  
Laurie Yablov's neice  
Jay, Rochelle and Joshua Leisner

**SHULDMAN KIDDUSH FUND**  
**in appreciation of**  
Sandy Axel  
Earl and Dale Oller  
**in honor of**  
Susan Abravanel's special birthday  
Earl and Dale Oller  
Jerry and Amy Brem's anniversary  
Earl and Dale Oller  
Joyce Singer's speedy recovery  
Earl and Dale Oller  
**in memory of**  
Jack Cohen  
Reena Davis  
Zalie Cordova  
Jack and Barbara Schwartz  
Lee Cordova's sister  
Earl and Dale Oller  
Sadie Feves  
Earl and Dale Oller  
Olga Guttman  
Ella Ostroff  
Ruby Solomon  
Earl and Dale Oller

**SOBLE RENOVATION FUND**  
**in memory of**  
Mildred Sax  
Delman and Sandey Fields  
Samuel Soble  
Jerome and Shirley Nudelman

**SONIA NUDELMAN FLORAL FUND**  
**in memory of**  
Sonia Nudelman  
Jerome and Shirley Nudelman  
Phillip and Sandra Nudelman

**STAMPFER BOOKSHELF FUND**  
**in honor of**  
Dale Oller's birthday  
Diane Solomon  
**in memory of**  
M.A. Rabin  
Dudley Harrington

**STAMPFER LECTURE FUND 2009**  
**in memory of**  
Zalie Lester  
Lee Cordova

**STRAUSS YTH ACT FUND 2009**  
**in honor of**  
Adam Yoelin's engagement  
David and Naomi Strauss  
**in memory of**  
Mildred Sax  
David and Naomi Strauss

**SYNAGOGUE FUND**  
**in honor of**  
Steven and Wendy Kahn's High Holy Day Aliyah  
Steven and Wendy Kahn  
Adam Yoelin's engagement  
Marvin and Leah Nepom  
**in memory of**  
Samuel Abend  
Marilyn Abend  
Mark Barnett's mother  
Jeff and Sandy Axel  
Sam Benton  
Julie Siegel

## Contributions continued:

Ruth Blauer  
*Henry Blauer*  
 Flora Perkel Bockmon  
*Robert Perkel*  
 Alfred Brownstein  
*Helen Runstein*  
 Vera Brownstein  
*Helen Runstein*  
 Harry Bruss  
*Leo Bruss*  
 Regina Bruss  
*Leo Bruss*  
 Fred Buchwalter  
*Marianne Buchwalter*  
 Lee Cordova's sister  
*Jeff and Sandy Axel*  
*Victor and Toinette Menashe*  
 Anna Dunis  
*Paul Goldhammer*  
 Gustav Falkenstein  
*Pincus Gotlieb*  
 Salomon Feuchtbau  
*Ernest Waxman*  
 Abraham Fleischman  
*Lillian Braverman*  
 Josephine Fuechtbaum  
*Ernest Waxman*  
 Lev Gandel  
*Rosa Sheglova*  
 Leona Goldberg  
*David and Deborah Menashe*  
 Fanny Golden  
*Hilliard Golden*  
 Bernard Goldhammer  
*Robert and Harriet Perkel*  
 Elizabeth Goldhammer  
*Robert and Harriet Perkel*  
 Erna Graetz  
*Leo Greenstein*  
 Philip Greenberg  
*Charles Greenberg*  
 Gersh Greenshpoon  
*Betya Tenster*  
 Jacob Hammersley  
*Gloria Bacharach*  
 Anita Hillebrandt  
*Dennis Steinberg*  
 Jack Israel  
*Vicki Zidell and Francine Frisch*  
*Rebecca Israel*  
 Alfred Kaufman  
*Julian Kaufman*  
 Morton Kessler  
*Fay Kessler*  
 Mendel Khatayevich  
*Nina Khatayevich*  
 Khaym Kizhner  
*Emiliya Kizhner*  
 Reyzya Kizhner  
*Emiliya Kizhner*  
*Emiliya Kizhner*  
 Esther Krasell  
*Arnold and Ruth Hopfer*  
 Jacob Krasell  
*Arnold and Ruth Hopfer*  
 Patty Lenhoff's aunt  
*Jeff and Sandy Axel*  
 Reuben Lenske  
*Shirlee Lenske*  
 Edward Lieberman  
*Stephen Lieberman*  
 Bayla Mad  
*Isaak Mad*  
 Mort Mendelsohn  
*Jeff and Sandy Axel*  
 Morton Mendelsohn  
*Robert and Mara Shlachter*

Paula Neuburger  
*Inge Hamburger*  
 Serafima Osadchaya  
*Rimma Diner*  
 David and Charlotte Ostomel  
*Jeff Ostomel*  
 Nathan Packouz  
*Harriet Towne*  
 Pesya Pantofelman  
*Sharlota Aginsky*  
 Daniel Peizner  
*Richard and Mary Peizner*  
 Herbert Rosenberg  
*Mark Rosenberg*  
 Byron Skaug  
*Wanda Fullwiler*  
 Eva Stern  
*Margie Stern*  
 Gussie Titelbaum  
*Michael Titelbaum*  
 Ray Wiener  
*Larry Wiener*  
 Evelyn Zurow  
*Rick and Debbie Zurow*  
**TIKKUN OLAM FUND**  
**in appreciation of**  
 Rabbi Joshua Stampfer  
*Arden and Lois Shenker*  
**in honor of**  
 Leonard and Goldie Barde  
*Arden and Lois Shenker*  
 Arden Shenker's special birthday  
*Delman and Sandey Fields*  
**in memory of**  
 Lee Cordova's sister  
*Arden and Lois Shenker*  
 Fanny Golden  
*Sheri Cordova*  
 Mildred Sax  
*Arden and Lois Shenker*

### TOINETTE MENASHE BOOKSHELF FUND

**in memory of**  
 Maurice Blum  
*Ruth Blum*  
 A.E. Rosenberg  
*Ruth Blum*  
 Sylvia Rosenberg  
*Ruth Blum*

### USY TRAVEL FUND

**in honor of**  
 Naomi Leavitt's American Citizenship  
*Jeff and Sandy Axel and Family*

### VAAD SHEL HESED FUND

**in memory of**  
 Esther Stone  
*Steven, Wendy, Rebecca & Michael Kahn*

### WEINSTEIN CHAPEL FUND

**in memory of**  
 Violet Hyman  
*Carolyn Weinstein*

### WOMEN'S LEAGUE SCHOLARSHIP FUND

**in memory of**  
 Morton Mendelsohn  
*Stuart and Ann Linda Yudman*  
 Morton Mendelsohn  
*Barry and Karla Benson*  
*Steven, Wendy, Rebecca & Michael Kahn*  
 Mr. Mendelsohn  
*Richard and Lauren Botney*  
 Susan Sutherlin's father  
*Gloria Bacharach*

Tzedakah is a central mitzvah of Judaism. Use it often and in good health! Tzedakah honors the giver and the recipient. You can make a Tzedakah contribution to honor, remember or thank someone who is important to you. It is also the custom in many communities to give Tzedakah in appreciation of an honor or aliyah during any service.

**Please Be Sure To Include The Names And Addresses Of Both The Donor And The Recipient, As Well As The Name Of The Fund.**

We gratefully acknowledge donations to the mentioned Synagogue Funds.

cont. from page 3

Tickets will be \$25 at the door, \$18 students/seniors but I hope no one has to pay full price. Tickets in advance are \$20 adults and \$12 students/seniors. There is also a discounted family price and a discount for groups of ten or more. Form a group! Bring your Havurah group, your book group, your mah jongg group, your poker group, the families of your religious school class – You get the idea. It's not hard to get a group of ten and all of you will save!

The Percy Bernstein Orchestra will be performing again on Friday, January 30. This band gets better and better every performance. Bring your dancing shoes and join us for this joyous service.

Finally, after 22 years on Wednesday, I have changed my day off to Tuesday. I am now teaching in the Wednesday Night Religious School program and loving every minute of it. Last semester I taught Jewish Meditation to a terrific group of teens and this semester I plan to teach Megilla reading as well as Jewish Women in the Bible.

**Cantor Linda Shivers**

## Answers to CC



### questions:

**1. There are 9225 Paver stone in the upper Plaza.**

**2. 105 Patron Donors would help us achieve our Capital Campaign Goal designated for Paver sales.**

## In Memoriam

We mourn the loss of synagogue members:

**Bea Hochfeld (z"l)**

*May their souls be bound in the bonds of eternal life.*

## CONDOLENCES

Our condolences to our members and their families,

**John Barton** on the death of his father.

**Doron Bandel** on the death of his father, Zvi Bandel.

**Bruce & Louise Magun** on the death of their newborn grandchild.

*May their memories be a blessing.*

### WHEN A DEATH OCCURS

Call the synagogue office 503.246.8831 so that we may inform **Rabbi Isaak** and/or **Rabbi Greenstein** and be of assistance. During business hours, ask for **Michelle Caplan**, ext 114. After business hours, on weekends & holidays, contact **Michelle Caplan** at 503.481.0164, **Rabbi Isaak** 503.228.8819 or the funeral home of your choice for assistance. Most Jewish funerals in Portland are arranged by Holman

Funeral Service, 503.232.5131.

If you wish Tahara for your loved one—respectful preparation for burial according to ancient Jewish tradition—you may request it from Holman's Funeral Home or the funeral home of your choice. The funeral home will then notify The Chevra.



**Dr. Rebecca Kuperstein**  
Orthodontist

539 SE 39th Ave.

**(503) 236-3800**

Complimentary  
Consultation

**Parkside**  
Orthodontics

All Ages Welcome

[www.parksideortho.com](http://www.parksideortho.com)

**Get Organized!**  
Organizational Coaching

- Home or Office
- Free Consultation

**OregonizeMe**

Kate Herschman & Wendy Rosenfield

**(503) 244-0250**

[oregonize\\_me@yahoo.com](mailto:oregonize_me@yahoo.com)

phone: 503-244-6905  
[www.juliafitzgeraldcpa.com](http://www.juliafitzgeraldcpa.com)

**Julia Fitzgerald, CPA, PC**

4620 SW Beaverton-Hillsdale Hwy,  
Suite B-4 Portland, OR 97221

A professional resource for your  
home business or small business.  
QuickBooks® • Taxes • Business Development

**HOLMAN'S** FUNERAL SERVICE

SINCE 1854

**(503) 232-5131**  
FAX: **(503) 232-5134**

2610 S.E. HAWTHORNE BLVD.  
PORTLAND, OR 97214-2998

**Tree of Life Photography**



[www.TreeOfLifePhotography.com](http://www.TreeOfLifePhotography.com)



**Custom Invitations for Your**  
• Weddings • Bar/Bat Mitzvah  
• All Occasions

**Occasionally Yours**  
By Marci Atkins

**503-579-6719**  
[oyours@juno.com](mailto:oyours@juno.com)

10% Discount  
Mention this ad



**Dr. Mojgan Rostamian**  
invites you to try her  
**Family Dental Practice**  
Emergency and new  
patients are welcome.

2350 SW Multnomah Blvd.  
Suite I  
Portland, OR 97219

**503-246-8011**  
[www.rostamian.com](http://www.rostamian.com)



**Support Our Advertisers**

Check the ads on this page before you check the yellow pages.

**TravelWise by Bruce**

Book your travel online at

[www.travelwisebybruce.com](http://www.travelwisebybruce.com)

**Bruce Stern, Agent**

**503-380-0797**

**Affordable  
Family  
Memorials**

"Please let our family serve yours"

**503-515-7640**

JASON & ANGIE POPE

[www.affordablefamilymemorials.com](http://www.affordablefamilymemorials.com)

CCB #48109

**Quality Interior  
Painting**

**Dick Cranston  
Painting Co.**

**(503) 287-1760**

Interior & Exterior • Wallpapering  
Free Estimates

12438 N.E. Russell • Portland, OR 97230



**דור לדור**

**Realtors® for Every Generation**



**CAROLYN** 503.802.6415 | **ROBIN** 503.802.6405

Email: [weinsteinc@hasson.com](mailto:weinsteinc@hasson.com)

[www.cweinsteindpxhomes.com](http://www.cweinsteindpxhomes.com)

**HASSON**  
COMPANY  
REALTORS

25 NW 23rd Place  
Portland, OR 97210

Portland Jewish Academy

**PJA** **ישיבה**

**Portland Jewish Academy**  
Elementary and Middle School

Responsibility • Study • Respect • Appreciation • Jewish Identity • Community

After your children have a great Jewish foundation in preschool,  
they'll flourish with PJA's strong academics and values.

Call for a personal tour • 503-535-3599 • [www.portlandjewishacademy.org](http://www.portlandjewishacademy.org)

**Call to reserve this space today!**

**For a price quote call**

**John Cornish at 1-800-950-9952**

**Ext. 2609**

**Email: [jcornish@4LPi.com](mailto:jcornish@4LPi.com)**

Congregation Neveh Shalom  
2900 SW Peaceful Lane  
Portland, Oregon 97239  
Change Service Requested

NONPROFIT  
ORGANIZATION  
U.S. POSTAGE  
PAID  
Portland, Oregon  
Permit No. 963

DATED MATERIAL

The Chronicle is a publication of Congregation Neveh Shalom 2900 SW Peaceful Lane, Portland, OR 97239  
Provided free with membership.

When a death occurs  
Call the synagogue office 503.246.8831 so that we  
may inform Rabbi Isaak and or Rabbi Greenstein  
and be of assistance. After business hours, on  
weekends holidays, contact Michelle Caplan at  
503.481.0164 or Rabbi Isaak 503.228.8819  
See page 14 for more information






#### DIRECTORY

Congregation Neveh Shalom Affiliated with USCJ Office 503.246.8831, FAX 503.246.7553  
<http://www.nevehshalom.org> email: [info@nevehshalom.org](mailto:info@nevehshalom.org)

**Rabbi Daniel Isaak**  
ext 115, [disaak@nevehshalom.org](mailto:disaak@nevehshalom.org)  
**Rabbi Bradley Greenstein**  
ext 136, [bgreenstein@nevehshalom.org](mailto:bgreenstein@nevehshalom.org)  
**Rabbi Emeritus Joshua Stampfer**  
ext 119, [jstampfer@nevehshalom.org](mailto:jstampfer@nevehshalom.org)  
**Cantor Linda Shivers**  
503.293.7301, [cantor@nevehshalom.org](mailto:cantor@nevehshalom.org)  
**Fred Rothstein, Executive Director**  
ext 134, [frothstein@nevehshalom.org](mailto:frothstein@nevehshalom.org)  
**Darlene Arntson, Admin. Asst.**  
ext 135, [darntson@nevehshalom.org](mailto:darntson@nevehshalom.org)  
**Marci Atkins, Clergy Asst. & Events Coordinator**  
503.293.7308, [matkins@nevehshalom.org](mailto:matkins@nevehshalom.org)  
**Susan Bernstein, Director, Youth Education**  
503.293.7306, [sbernstein@nevehshalom.org](mailto:sbernstein@nevehshalom.org)  
**JoAnn Bezodis, Program & Fundraising Director**  
503.293.7309, [jbezodis@nevehshalom.org](mailto:jbezodis@nevehshalom.org)  
**Michelle Caplan, Member Services/Cemetery Director**  
503.293.7305, [mcaplan@nevehshalom.org](mailto:mcaplan@nevehshalom.org)  
**Jonathan Emanuel, Youth Director**  
ext. 142, [jemanuel@nevehshalom.org](mailto:jemanuel@nevehshalom.org)  
**Marg Everett, Admin. Asst.**  
ext 112, [meverett@nevehshalom.org](mailto:meverett@nevehshalom.org)  
**Joe Goodman, Men's Club Co-President**  
[j3ngoodman@comcast.net](mailto:j3ngoodman@comcast.net)  
**Hilde Jacob, Librarian**  
503.293.7311, [hjacob@nevehshalom.org](mailto:hjacob@nevehshalom.org)

**Lisa Kitchen, Graphic Designer/Admin. Asst.**  
ext 133, [lkitchen@nevehshalom.org](mailto:lkitchen@nevehshalom.org)  
**Doug Lenhoff, President**  
[doug@dibroker.com](mailto:doug@dibroker.com)  
**Dayle Maizels-Tyrrell, Religious School Asst.**  
503.293.7312, [dayle@nevehshalom.org](mailto:dayle@nevehshalom.org)  
**Julie Marquis, Admin. Asst.**  
ext 111, [jmarquis@nevehshalom.org](mailto:jmarquis@nevehshalom.org)  
**Rebecca Moeri, Reception/Admin. Asst.**  
ext 100, [rmoeri@nevehshalom.org](mailto:rmoeri@nevehshalom.org)  
**Wendi Menashe, Capital Campaign Coordinator**  
[wmenashe@nevehshalom.org](mailto:wmenashe@nevehshalom.org)  
**James Monaghan, Cemetery Maintnance**  
971.207.6974 [mlm51@aol.com](mailto:mlm51@aol.com)  
**Caron Blau Rothstein, Program Coordinator**  
ext 139, [crothstein@nevehshalom.org](mailto:crothstein@nevehshalom.org)  
**Jan Skolnik, Foundation School Director**  
503.293.7307, [jskolnik@nevehshalom.org](mailto:jskolnik@nevehshalom.org)  
**Bruce Stern, Men's Club Co-President**  
[bruce@thesternfamily.net](mailto:bruce@thesternfamily.net)  
**Susan Sutherlin & Linda Alpert,**  
Women's League Co-Presidents & Judaica Shop,  
ext 127  
**Debbi Villani-Allen, Administrative Director**  
ext 125, [dvillani@nevehshalom.org](mailto:dvillani@nevehshalom.org)  
**Kathy Wolfson, Foundation School Asst.**  
503.293.7307, [kwolfson@nevehshalom.org](mailto:kwolfson@nevehshalom.org)

# CONGREGATION NEVEH SHALOM JANUARY 2009/5769 TEVET-SHEVAT

SUNDAY	MONDAY	TUESDAY	WEDNESDAY	THURSDAY	FRIDAY	SATURDAY
				5 TEVET	6 TEVET	7 TEVET
				1 9am Minyan	2 7:15am Minyan Dante Stone Bar Mitzvah	3 Dante Stone Bar Mitzvah
					6:15pm Kabbalat Shabbat Singing Service 7:30pm 1st Friday Dinner	9am Shabbat Services 10:15am Tot Shabbat w/ Jordan Epstein 10:15am Kehilat Noar
				Office Closed	4:21 pm 	VAYIGASH
8 TEVET	9 TEVET	10 TEVET	11 TEVET	12 TEVET	13 TEVET	14 TEVET
4 9am Minyan	5 7:15am Minyan	6 7:15am Minyan	7 7:15am Minyan	8 7:15am Minyan	9 7:15am Minyan	10
9am Religious School 9:30am Shomrei Teva- Tuv Ha'aretz 9:45am 6th Grade Parent Mtg. 12pm 13 Mitzvot 12:30pm PBO Rehearsal 2:15pm Middle School Klezmer Band	1pm Mah Jongg 4:15pm Hebrew School 4:15pm Kochavim 6:30pm SAFAM planning mtg. 7:30pm Choir Practice	9am Melton 4:15pm Hebrew School 5pm Talmud 6:45pm Adult Hebrew for Beginners 7pm Melton	4:15pm Hebrew School 4:15pm Kochavim 6pm Rel High School & Dinner	4:15pm Hebrew School 4:30pm Bible Class 7:30pm Executive Mtg.	9am CNS Playgroup 10am Shabbat Singing 6:15pm Kabbalat Shabbat Service 7:30pm Membership Dinner	9am New Babies Shabbat Services 9:30am Downstairs Minyan 10:15am Kehilat Noar
		FAST OF 10TH OF TEVET			4:28 pm 	VEYECHI
15 TEVET	16 TEVET	17 TEVET	18 TEVET	19 TEVET	20 TEVET	21 TEVET
11 9am Minyan	12 7:15am Minyan	13 7:15am Minyan	14 7:15am Minyan	15 7:15am Minyan 4:15pm Hebrew School 4:30pm Bible Class	16 7:15am Minyan	17
9am Religious School 9:30am Men's Club 9:45am 3rd grade Parents Mtg. 10am Chesed Comm. Mtg. 12:30pm PBO Rehearsal 1pm Tikkun Olam Symposium 2:15pm Middle School Klezmer Band	1pm Mah Jongg 4:15pm Hebrew School 4:15pm Kochavim 7:30pm Choir Practice	9am Melton 12pm Senior Lunch 4:15pm Hebrew School 5pm Talmud 6:45pm Adult Hebrew for Beginners 7pm Melton	4:15pm Hebrew School 4:15pm Kochavim 4:15pm Notz'zim 6pm Rel High School & Dinner 7pm "The Light of Day: Help for Winter Mood Changes"	7pm What is Conservative Judaism? 7:30pm Board Mtg.	9am CNS Playgroup 10am Notz'zim 6:15pm Chik Chok Services & Dinner	9am Shabbat Services 10:15am Tot Shabbat w/ Levia 10:15am Kehilat Noar
					4:11 pm 	SHEMOT
22 TEVET	23 TEVET	24 TEVET	25 TEVET	26 TEVET	27 TEVET	28 TEVET
18 9am Minyan	19 7:15am Minyan	20 7:15am Minyan	21 7:15am Minyan	22 7:15am Minyan	23 7:15am Minyan	24
9am Shomrei Teva Creekside Renovation 12:30pm PBO Rehearsal 2:15pm Middle School Klezmer Band	10am Cemetary Mtg. 1pm Mah Jongg 6:30pm SAFAM Planning Mtg. 7:30pm Choir Practice 7:30pm Teen Lounge Night	9am Melton 4:15pm Hebrew School 5pm Talmud 6:45pm Adult Hebrew for Beginners 7pm Melton	4:15pm Hebrew School 4:15pm Kochavim 6pm Rel High School & Dinner	4:15pm Hebrew School 4:30pm Bible Class 7pm Taste & Travel 7pm WL Book Review "The Faith Club" 7:30pm What is Conservative Judaism?	9am CNS Playgroup 6:15pm Kabbalat Shabbat Service 7:30pm WL Dinner	9am Shabbat School 9:30am Combined Minyan 10:15am Kehilat Noar
					4:36pm 	VA'ERA
29 TEVET	1 SHEVAT	2 SHEVAT	3 SHEVAT	4 SHEVAT	5 SHEVAT	6 SHEVAT
25 9am Minyan	26 7am Minyan	27 7:15am Minyan	28 7:15am Minyan	29 7:15am Minyan	30 7:15am Minyan	31 7:15am Minyan
9am Religious School 9:30am Memerbrship Mtg. 9:45am 5th grade Parents Mtg. 12:30pm PBO Rehearsal 2:15pm Middle School Klezmer Band 7pm Israel Movie Night	1pm Mah Jongg 4:15pm Hebrew School 4:15pm Kochavim 7:30pm Choir Practice	9am Melton 4:15pm Hebrew School 5pm Talmud 6:45pm Adult Hebrew for Beginners 7pm Melton	9am Paretn Coffee 4:15pm Hebrew School 4:15pm Kochavim 6pm Rel High School & Dinner	4:15pm Hebrew School 4:30pm Bible Class 7pm Intro to Judaism 7:30pm What is Conservative Judaism?	9am CNS Playgroup 6:15pm Kabbalat Shabbat Service Rachel Brodie-Scholar in Resdience	9am Shabbat School 9am Combined Minyan 10:15am Kehilat Noar 12pm Study Session w/ Rachel Brodie 5:30pm Shoreshim Havdallah event 6:30pm Hinenu
	ROSH HODESH				4:56pm 	BO



# **SPECIAL**

## **Soup & Salad Shabbat Dinner**

Come enjoy a light soup and salad dinner with your Neveh Shalom Family.  
*This dinner is partially funded by the Sylvia Pearlman Membership Enhancement Fund.*

Free to Neveh Shalom Members.

Friday, January 9th

Immediately following Kabbalat Shabbat Services



Reservations required. Non-Members welcome...

\$7 per person, children 10 and under free.

RSVP by noon on the preceding Wednesday (January 7th.)

For reservations after 12pm on Wednesday, a \$5 per person convenience fee will be charged.

Family maximum applies to on-time reservations only.

Call Rebecca at 503.246.8831x100, [rmoeri@nevehshalom.org](mailto:rmoeri@nevehshalom.org) or send in the bottom of this form back to  
Congregation Neveh Shalom 2900 SW Peaceful Lane Portland, Or 97239

☐ Member

Name \_\_\_\_\_ Phone \_\_\_\_\_

\_\_\_\_\_ # of adults

\_\_\_\_\_ # children

\_\_\_\_\_ total attending

☐ Non-member

Name \_\_\_\_\_ Phone \_\_\_\_\_

\_\_\_\_\_ # of adults (\$7)

\_\_\_\_\_ # children

\_\_\_\_\_ \$ total enclosed





# Marianne Wollstein Mah Jongg Madness V Brunch and Tournament

Sponsored by  
Neveh Shalom Women's League

**Sunday, February 1, 2009**

**11:00am**

**Congregation Neveh Shalom**

**\$20.00 per person**

**Reservations must be made by January 22nd**

**Please join us for a fun-filled day of Mah Jongg and friendship  
Experienced and new players are welcome (no teaching)**

**11:00 am Brunch and explanation of rules**

**12:00 -3:45pm Tournament and prizes**

For more information please contact:

Judi Goodman at 503.531.7205 or Sarah Coblens at 503.466.2256

---

**Payment must accompany registration form**

**No registration taken after January 22nd.**

Attention Mah Jongg

Please make checks payable to Neveh Shalom Women's League

Name(s) \_\_\_\_\_

Phone \_\_\_\_\_

I will be coming for brunch:    yes \_\_\_\_\_ no \_\_\_\_\_

I can provide a Mah Jongg set \_\_\_\_\_ card table \_\_\_\_\_



# MEN'S CLUB

## TEXAS HOLD-'EM POKER TOURNAMENT SUNDAY MARCH 1, 2009

DINNER 4:45 PM

TOURNAMENT 5:30PM – 9:30 PM

PROCEEDS BENEFIT YOUTH PROGRAMMING & THE CAPITAL CAMPAIGN

### THREE LEVELS OF SUPPORT ARE AVAILABLE

1. EVENT SPONSOR — 2 REGISTRATIONS, LARGE SIGNAGE AND ACKNOWLEDGEMENT. \$250
2. TABLE SPONSOR — 1 REGISTRATION, TABLE SIGNAGE AND ACKNOWLEDGEMENT. \$100
3. PLAYER — 1 REGISTRATION \$ 50

### REGISTRATION DUE DATE FEBRUARY 24, 2009

REGISTER NOW TO HOLD YOUR SPOT FOR THIS FANTASTIC EVENT ON MARCH 1ST. YOUR REGISTRATION INCLUDES A PASTA DINNER, THREE FREE WINE OR BEER TICKETS, COMPLIMENTARY SOFT DRINKS AND TOURNAMENT PLAY. EVENT IS OPEN TO MEN AND WOMEN 18 AND OVER.

THE TOURNAMENT WILL BE PROFESSIONALLY MANAGED BY WILD BILL'S AND YOU WILL BE PLAYING FOR FABULOUS PRIZES DONATED BY MEMBERS AND BUSINESSES IN THE COMMUNITY. IN ADDITION THERE WILL BE A DOOR PRIZE DRAWING AT THE END SO YOU'LL WANT TO STAY AND PLAY.

ADDITIONAL BUY-INS FOR CHIPS ARE AVAILABLE AS WELL. IF YOU GO BUST, STAY AND PLAY FOR FREE TO BE ELIGIBLE FOR THE DOOR PRIZE DRAWINGS.

---

### MEN'S CLUB TEXAS HOLD-'EM POKER TOURNAMENT

PLEASE MAKE YOUR CHECK PAYABLE TO NEVEH SHALOM MEN'S CLUB AND MAIL YOUR CHECK AND THE BOTTOM

OF THIS FORM BY **FEBRUARY 24, 2009** TO:

NEVEH SHALOM MEN'S CLUB C/O HAROLD LESCH  
7160 SW QUEEN LANE, BEAVERTON, OR 97008

EVENT SPONSOR: \_\_\_\_\_ TABLE SPONSOR: \_\_\_\_\_ PLAYER: \_\_\_\_\_

NAME: \_\_\_\_\_ ADDRESS: \_\_\_\_\_

PHONE: \_\_\_\_\_ EMAIL: \_\_\_\_\_

YOU WILL RECEIVE EMAIL CONFIRMATION AND REMINDERS. SORRY NO REFUNDS, BUT SUBSTITUTIONS ARE PERMITTED. YOUR REGISTRATION FEE IS TAX DEDUCTIBLE AS PERMITTED BY LAW. APPROXIMATE VALUE OF DINNER AND REFRESHMENT IS \$10. YOU MUST BE 21 OR OVER TO CONSUME ALCOHOLIC BEVERAGES. YOU MUST BE PRESENT TO WIN DOOR PRIZES. ALL TOURNAMENT RULES AND DECISIONS ARE AT THE SOLE DISCRETION OF WILD BILL'S.



Congregation Neveh Shalom 2900 SW Peaceful Lane, Portland, Or 97239 503.246.8831 [www.nevehshalom.org](http://www.nevehshalom.org)



# Shomrei Teva

(Protectors of Nature)

Congregation Neveh Shalom's Environment Committee

*Invites You to the Third  
Annual Neveh Shalom*

## Tu B'shvat Seder

*Time:*

5:00 to 7:00pm

*Date:*

Sunday, February 8th, 2009

*Where:*

Neveh Shalom's Birnbach Hall

This year our seder will be oriented toward an adult Jewish audience  
(13 and over). Come join us on Tu b'Shvat as we eat  
*ritual foods, sing, dance, pray, and learn from the mystics  
about Jewish concerns for the earth.*

Any questions please contact Jordan Epstein at  
503.245.6580 or [yaakovm@comcast.net](mailto:yaakovm@comcast.net)

***Cost is \$6 per participant***

Childcare can be provided. Please RSVP to Rebecca in the  
Neveh Shalom office by February 3rd.

.....  
***PLEASE RSVP BY February 3rd***

Return this portion with a check for the total amount to Rebecca Moeri in the  
Neveh Shalom office at 2900 SW Peaceful Lane, Portland, Or 97239  
or contact her at 503.246.8831 or [rmoeri@nevehshalom.org](mailto:rmoeri@nevehshalom.org)

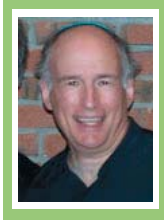
Name\_\_\_\_\_Phone\_\_\_\_\_

\_\_\_\_#of participants \$6

\_\_\_\_total \$ enclosed



# Safam is back!



Saturday, February 7<sup>th</sup> 7:30pm  
Come Help Us Celebrate our  
140<sup>th</sup> Anniversary!

Main Sanctuary of Congregation Neveh Shalom

America's favorite Jewish rock band has performed at Neveh Shalom twice before and was a huge success. Their "Jewish American sound" has dominated Jewish music since 1974. Their music entertains and inspires audiences of all ages and denominations.

All ticket sales benefit Youth Education and Choir.

## Ticket Prices

IN ADVANCE: Students & Seniors \$12

Groups of 10 or more \$10 per person

Adults \$20, Families \$48 (2 adults & 2 children) children under 3 are free

AT DOOR: Adults \$25, Students and Seniors \$18

To buy tickets online go to [www.nevehshalom.org/happenings/safam](http://www.nevehshalom.org/happenings/safam) by January 30<sup>th</sup>

or return this portion of the form to the Neveh Shalom Office by Friday, January 30<sup>th</sup>.

Any questions? Please contact the Neveh Shalom office at 503.246.8831.

Name \_\_\_\_\_ Phone \_\_\_\_\_

Address \_\_\_\_\_ City \_\_\_\_\_ Zip \_\_\_\_\_

Visa/MC # \_\_\_\_\_ 3 digit CW code \_\_\_\_\_

# Student tickets \_\_\_\_\_ # Senior tickets \_\_\_\_\_ # Group tickets \_\_\_\_\_ # Adult tickets \_\_\_\_\_

# Family tickets \_\_\_\_\_ Total # of tickets \_\_\_\_\_ Total amount enclosed \$ \_\_\_\_\_

